

# Building On



...expanding spiritual horizons at FVUUF

Volume 1, Issue 3 — October 9, 2006

## Beyond The Building

By Miriam Douglass,  
Governing Board President

In the next few months, much of our energy will be focused on the physical design of our building expansion—the bricks and mortar of the process—and what it will cost. Overriding the process is the question, “Why do we want to expand our facilities?” The answer: In order to attain our mission, we need more space that is well designed to fit our vision.

In May 2004, the congregation adopted a new FVUUF vision statement to guide us in planning for the future. It articulates what we value and what we want to become.

Six goals were derived from the vision statement. In the past two years we have focused on three of them: increasing staff, improving our financial security, and implementing an organizational structure that enables us to operate as the large congregation we have become.

Now it is time to address our physical needs in order to attain two more of our goals to:

1. Provide appropriate facilities and resources to enable the Fellowship to be an open and welcoming community; and
2. Be a nurturing community that provides a variety of opportunities for deepening our lives.

Expanding our physical facilities is a means to reach our vision. That is the excitement of the building program ahead. ☺

## Three Options For Addition

At services the weekend of Sept. 30-Oct. 1, three options for expanding our existing Fellowship building were presented. If you didn't attend that weekend, you'll find much of the information presented in this newsletter, including the three design options.

See the center of this edition of *Building On* for the floor plans and some points to consider for each. More information, including the PowerPoint presentation, will be available on our Web site at <http://www.fvuuf.org> ☺

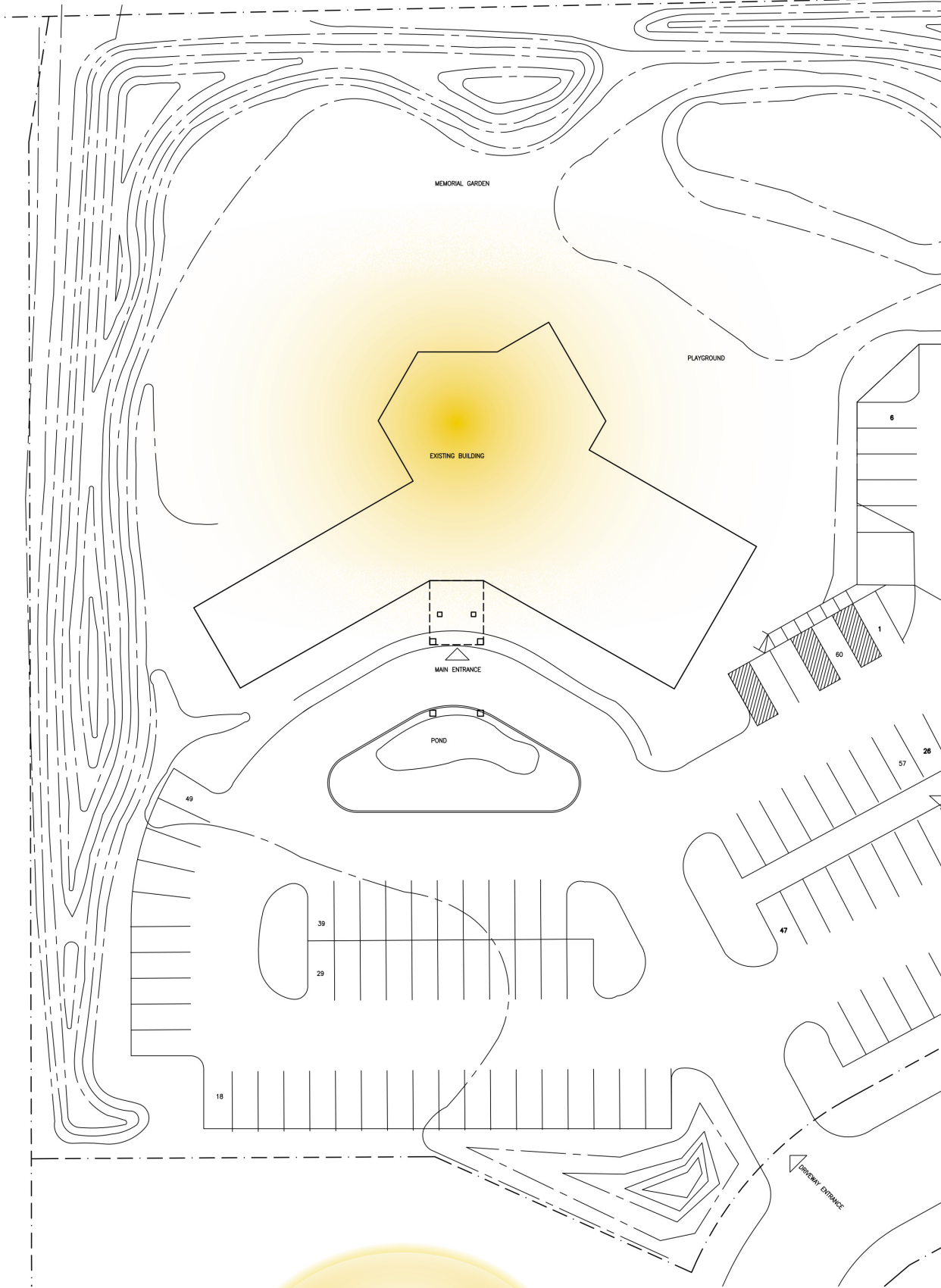
*“Expanding our physical facilities is a means to reach our vision.”*

## Your Turn: Ask Away

Listening Sessions will be held after each service the weekend of Oct. 14-15 to give members and friends

time to think about this big step in the life of our Fellowship, and then ask questions or give your feedback. Which of the plans will fulfill our hopes and dreams for our spiritual home, while being fiscally and environmentally responsible? Is there enough meeting room and storage space? I love (or loathe) the balcony. We want to hear from you!

Perhaps you have a question that hasn't been thought of yet—now's the time to find out what may have been missed. Members of the Building Design Team will be available for your questions and comments at the three Listening Sessions in the Founders Room. Then, come to the congregational meeting to vote for your preferred plan on Sunday, Oct. 22, at 7:00 p.m. (see “Pick Your Plan” on the back page). The Building Team co-chairs also invite you to contact them at: Albert Park 920-722-7322 [albert.park@thedacare.org](mailto:albert.park@thedacare.org) and Terry Dawson 920-734-0013 [tdawson@focol.org](mailto:tdawson@focol.org). ☺



Mar-May 2006  
Dream Phase &  
Congregational  
Meeting Vote

Sept 30-Oct 1  
Conceptual  
Design  
Presentation

Oct 6  
Design  
Options  
Newsletter

Oct 14-15  
Congregation  
Listening  
Sessions

Oct 22  
Congregational  
Meeting Vote

## Current Building Shown with Site Plan for Additional Parking

*Building On* is published periodically to inform members, friends and the wider Unitarian Universalist community about the Fellowship's building expansion project.

### Building Steering Committee

Albert Park &

Terry Dawson,  
*Co-chairs*

Miriam Douglass,

*Governing Board President*

Rev. Roger Bertschausen,

*Minister*

Diane Cochran,

*Administrator*

Marie Murton,

*Membership Coordinator*

Lisa Manske-Barnes,

*Finance Committee*

Nadine Miller,

*Communications Team*

### Design Team

Albert Park &

Terry Dawson,  
*Co-chairs*

Gerry Andrews

Jim Coakley

Sherry Gates

John Luke

Maryanne Marx

Candice Mortara

Holly Park

Dave Wallace

**Fox Valley Unitarian  
Universalist Fellowship**

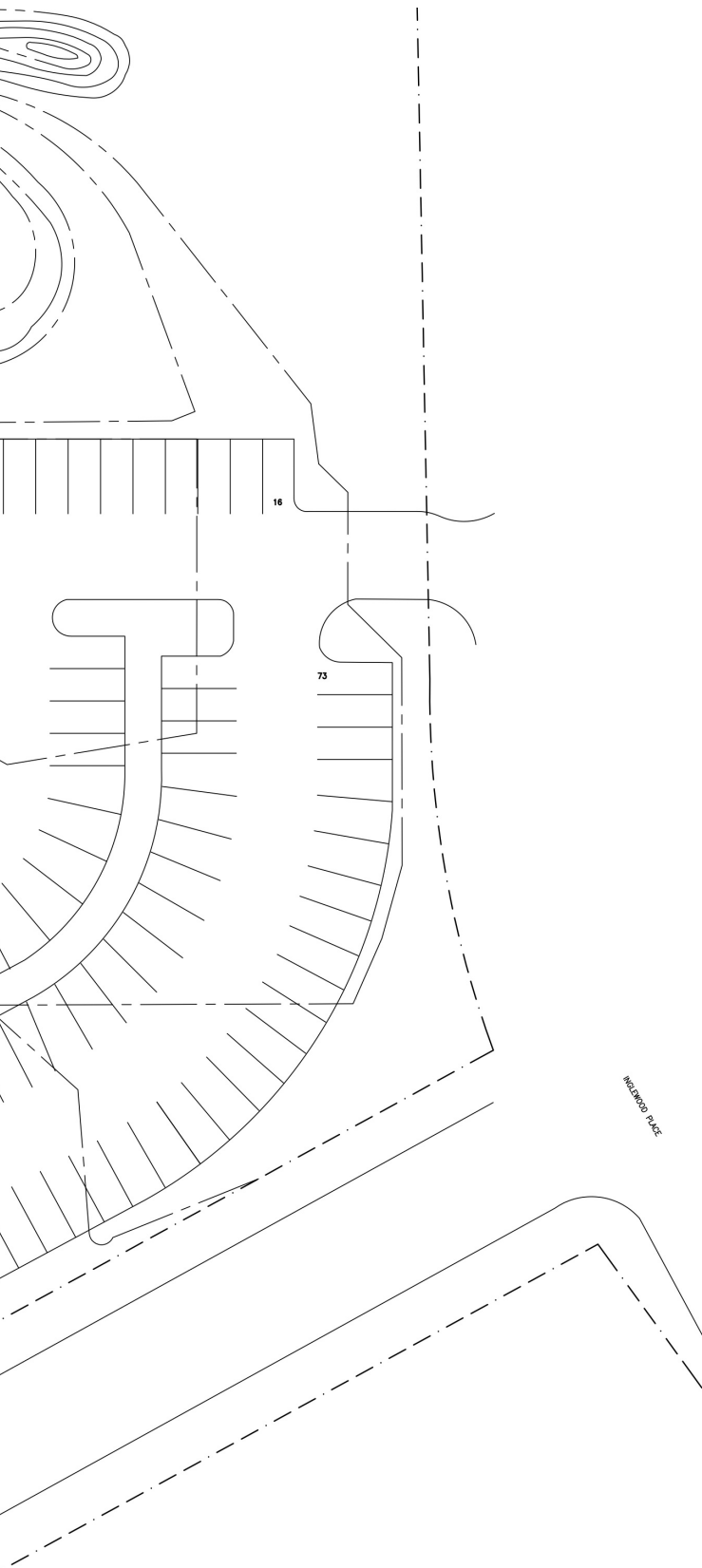
2600 E Philip Ln

PO Box 1791

Appleton WI 54912-1791

(920) 731-0849

[fvuuf@new.rr.com](mailto:fvuuf@new.rr.com)



Oct 23  
Newsletter

Nov 15-18  
Feasibility  
Study

Spring 2007  
Capital  
Campaign

2007  
Final  
Design

2007-08  
Construction

2008  
Occupancy

## Pick Your Floor Plan Oct. 22

**Who:** All members & friends

**What:** Congregational meeting

**When:** Sunday, Oct. 22 at 7 p.m.

**Where:** FVUUF Fellowship Hall

**Why:** To select one of three building expansion options to meet our needs and budget.

**How:** Only members may vote, but everyone is welcome to participate in the presentation and discussion on the proposals.

**If I can't attend?** Members may request an absentee ballot from board Secretary Aaron Sherer via the office. Contact FVUUF Secretary Julie Heidemann at 920-731-0849 or fvuufsec@new.rr.com. Absentee ballots must be returned to Sherer's mailbox at the Fellowship prior to the start of the meeting with your signature on the outside of the envelope. The names are checked against the membership list, and then the envelope is separated from your ballot to preserve anonymity. Proxy voting is not permitted by our bylaws.

## Peek-A-Boo Playground

*Peek-a-boo: Where's the playground?*

Two of the three plans for the Fellowship's expansion would make it necessary to move the playground. But never fear, our unique, land-loving playground wouldn't disappear, it would just relocate.

In the North and South building plans (see inserts), the playground will be recreated in the lot's southeast corner near the sedge meadow. "It will be easy to excavate the playground when they're doing the site work for the addition," says Gerry Andrews, an FVUUF member and owner of Landscape Associates, which designed the playground.

The current playground was built in 2005 under the leadership of the Playground Task Force with lots of volunteer labor in addition to the professional expertise of Landscape Associates. Playground Task Force co-chair Lisa Manske-Barnes, now a member of the Building Steering Committee, says the playground is about 50-percent complete and the existing materials would be reused in their new location. ☺

## Building Scraps

*Odds and ends of FVUUF Expansion news.*

- ❖ A white binder on the bookshelves in the FVUUF Library contains back issues of *Building On*, summaries of information from building-related meetings and other information about the project. Feel free to browse whenever you're in the building for more details.
- ❖ The 500-seat sanctuary is based on the Crystal Ball Committee's projections that FVUUF's potential membership is 1,200 members. Spread among three services, that equates to 500 seats.
- ❖ Next issue: What does "being green" mean for our building project? A preview of some of the environmentally friendly aspects of our addition. ☺